



# ROTARY VANE COMPRESSOR REMANUFACTURE

## SPECIALIZING IN FULLER/FLS & AC RO-FLO

TESCORP, a leading provider of design/build industrial compression applications and related aftermarket services, has fully staffed offices in Oklahoma. We strive for excellence in customer focus, integrity, and prompt attention to your needs.

- ▶ **RE-USE OF CASTINGS** allows for lower cost than OEM exchanges
- ▶ **ALL COMPRESSORS** are rebuilt to the same exacting factory specs
- ▶ **REBUILT MACHINES** come with the same TESCORP quality and warranty you have come to expect over the last 35 years





## TESCORP...WHEN DEPENDABLE SERVICE IS CRITICAL

### *TESCORP upgrades compressor manufacturing methods to reduce costs*

For over 35 years, TESCORA has been an industry leader in utilizing its field service, engineering, and manufacturing capabilities to allow the incorporation of new materials and techniques that were not common before. Now, TESCORA is introducing these same concepts into compressor remanufacturing to gain greater service life at a lower cost than previously experienced through factory-authorized exchange programs. TESCORA has expanded its capabilities to include services that were previously restricted by factory contract dictates. These industrial services are recognized techniques that TESCORA has supplied to the demanding oil & gas industry for many years but disallowed by major OEM equipment manufacturers in their quest to supply OEM replacement parts only.

In these difficult economic times, TESCORA recognizes that the most prudent solution to maintenance issues is quality repair instead of a much more costly compressor replacement. A high-quality restoration using modern manufacturing techniques on the compressor components can restore the service life of the compressor at greatly reduced expense. In addition, TESCORA is able to supply a warranty that meets or exceeds current OEM's offers.

### TESCORP SLEEVE

On cylinder assemblies that are dramatically out of internal diameter tolerances, TESCORA offers a re-sleeve process to restore the original design dimensions to the cylinder assembly and appropriate performance. This sleeve is manufactured specifically for TESCORA per our standards and specifications out of a harder and more durable iron. The sleeve once installed not only repairs the cylinder, but is stronger with greater tensile strength and less susceptible to wear.

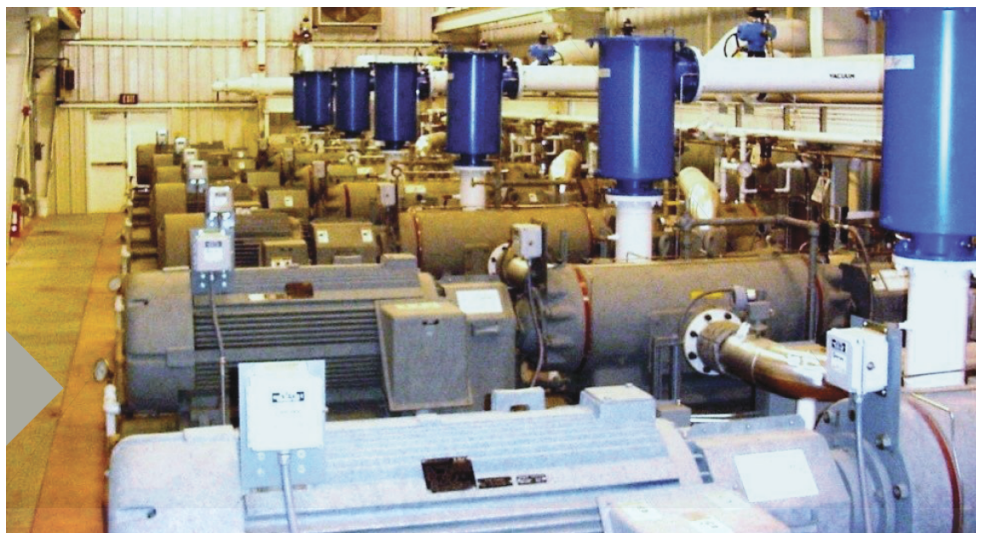
### TESCORP PLATINUM CARBON BLADES

- ▶ Significantly higher temp resistance reduces catastrophic failure
- ▶ 4x more wear resistant than Kevlar or Phenolic vanes
- ▶ Inert to water/moisture so can be stored indefinitely
- ▶ Patented process provides superior structural skin strength over other carbon vanes on the market, protecting vanes from delamination
- ▶ Higher carbon content provides greater vane integrity



### TESCORP WARRANTY

TESCORP guarantees the new parts installed in your compressor will be free of defects on all remanufactured parts for two (2) years.



TESCORP was chosen to remanufacture all of the rotary vane compressors at NASA wind tunnel facilities located in the Marshall Space Flight Facility.

# Compressor Casting Remanufacture

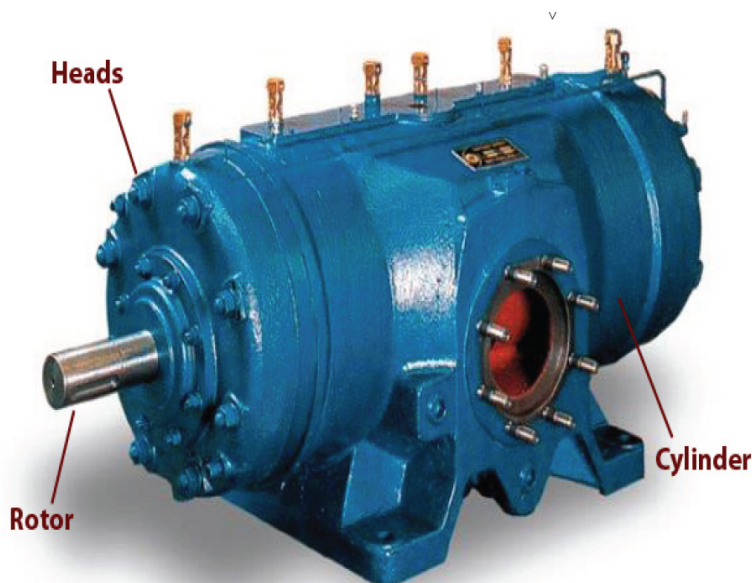


## CYLINDER REMANUFACTURE

The major compressor components that account for the greatest cost in the compressor service are:

- ▶ Compressor cylinder
- ▶ Compressor rotor
- ▶ Compressor heads

These are the components that had little allowable tolerance variation before mandated replacement. In most cases, these components may be repaired and remanufactured back to original tolerances and performance. Remanufacture is a fraction of the cost of replacement. TESCORN offers the following cylinder service for the extended life of the cylinder assembly without the costly component replacement. Manufacture's standards are that this wear is only acceptable within marginal standards before replacement is called for.



### TESCORP CYLINDER AND HEADS GUIDELINES

| OEM STANDARDS                                       | TESCORP RECONDITION SOLUTION  |
|---|---|
| Minimum length may not be repaired                  | Standard length may be restored through metalizing process  |
| Maximum bore may not be connected                   | Cylinder may be sleeved to meet original tolerances   |
| Internal cracks may not be repaired                 | May be repaired through our "metal stitch" process or resleeved                                   |
| Water ports can not be within a 1/8" of a stud hole | May be repaired through our "thermo-plastic powder spray" process & milled to original tolerances |
| Rotor contact with head                             | May be metalized back to standard dimensions  |

### TESCORP ROTOR GUIDELINES

| OEM STANDARDS                            | TESCORP RECONDITION SOLUTION  |
|--|---|
| Minimum length may not be repaired       | Standard length is restored through metalizing and machining  |
| Only minimum shaft straightening allowed | TESCORP can remanufacture the rotor shaft   |
| Limited rotor repair allowed             | TESCORP re-slots to standard and has additional slot sizing available beyond factory standard for additional service life. TESCORN TES-VANES are required |
| Limited blade re-slotting allowed        | TESCORP manufactures and supplies a steel (AISI 4140) rotor for replacement service   |

*Price estimates available upon request.*